

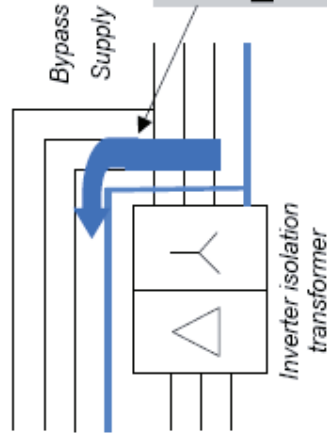
Transformer less

Comparison – Neutral

Transformer

In this case a new output neutral is created with the inverter transformer. A neutral connection is not required for the rectifier.

In case of a bypass operation and imbalanced load all current will pass through the bypass neutral



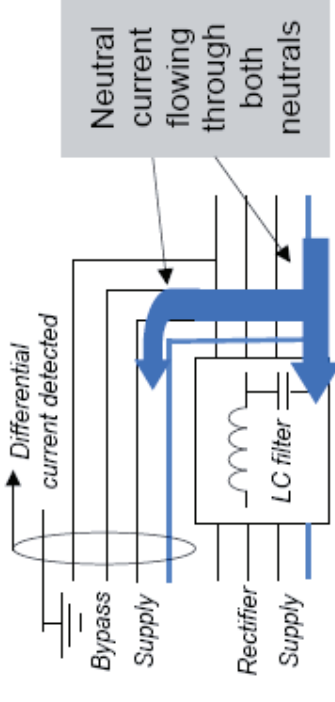
All neutral current (on bypass) will flow through bypass neutral

Comparison Neutral

Transformer less

With the transformerless unit the output neutral is the same as the input neutral. The neutral is “throughgoing”. The rectifier requires a neutral connection

In case of a bypass operation and an imbalanced load the neutral current will not flow back through the bypass neutral only. This can cause earth leakage detection devices to trip, interrupting the load



Neutral current flowing through both neutrals