

Copyright VW AG

Handbuch Service Technik

DMS Auftrags-Nr.: **undefined**

FIN:

Modelljahr: **2008**

Verkaufs-Code: **3C2046**

Modellbeschreibung: **PASSAT Lim. TREND 103 TDID6F**

Motorcode: **BKP**

Getriebe- Code: **HQF**

Amtl. Kennzeichen:

Achsantriebscode:

Benutzername:

Serviceberater- Name:

Service Campaign 23H9

Transaction No.: **2031934/1**

Piezo Pumpe Injector Elements

Release date: 07-Jan-2013

Notes

 **Repair instructions**

Technical background

On some vehicles with 2.0l TDI engine deposits can settle on the Piezo pump injector elements because of dirty engine oil. This can lead to running problems.

Remedy

Note.

Not all vehicles are affected by this campaign! Before a repair check with the application "Vehicle-specific information" in ELSA or the system "Service-Online" whether the vehicle is affected by this campaign!

On the affected vehicles the Piezo pump injector elements must be checked and if necessary replaced.

Please make sure that on the affected vehicle the check and repair of all open campaigns/measures are performed during the workshop visit.

Customer notification

Make sure all_affected vehicles are checked and repaired as part of the workshop visit.

If the campaign was not performed during a workshop visit, inform the customer straight away about the campaign. Use the sample letter "No campaign processing despite workshop throughput" of your importer.

Please promptly inform your new and used vehicle department, so that affected vehicles can be checked straight away and if necessary repaired.

Warranty accounting instructions

Damage number:	23H9 0099 SVO
Repair code:	According to the Warranty Handbook: 1= damage-causing repair operation or 2= damage-causing part
Claim type:	7 10 = campaign performed on registered vehicle 7 90 = campaign performed on not yet registered vehicle
Criterion:	See "Vehicle-specific information" (ELSA) or Service Online 01 = Passat, 88 to 103 kW TDI 02 = Passat, 120 to 125 kW TDI 03 = Golf, 125 kW TDI 04 = Touran with 125 kW TDI

Note:

The specified labour times may differ from the repair operations catalogue in ELSA!

Labour:	Check with the application "Vehicle-specific information" in ELSA or the system Service-Online, whether the vehicle is affected by the campaign "23H9" or whether the campaign has already been carried out.	0 TU
	Vehicle affected and campaign not yet carried according to the systems:	0 TU

	Check whether the campaign sticker with entry "23H9 date/stamp" is in the spare wheel well (next to the data sticker) . <i>Note:</i> <i>If the sticker is attached, agree the further procedure with the campaign coordinator of the importer.</i>	
	No sticker and campaign not yet carried out according to the systems:	
Criterion 01 to 04	Check of the pump injector elements APOS: 15 82 19 99 - APOS/2: Illustration T20-00 - 23H9 ** 98	70 TU
	Replace wiring loom for pump injector elements APOS: 97 62 55 99 - APOS/2: Illustration T20-00 - 23H9 ** 98	20 TU
	Replace one pump injector element APOS: 23 38 55 99 - APOS/2: Illustration T20-00 - 23H9 ** 98	130 TU
	Replace two or three pump injector elements APOS: 23 38 56 99 - APOS/2: Illustration T20-00 - 23H9 ** 98	160 TU
	Replace four pump injector elements APOS: 23 38 56 99 - APOS/2: Illustration T20-00 - 23H9 ** 98	190 TU
**	(Enter the criterion instead of **)	

Further campaigns to be observed: See "Vehicle-specific information" (ELSA) or Service Online

Genuine parts

Order the parts as required.

Quantity	Designation	Part No.:	Engine code
----------	-------------	-----------	-------------

1x	Campaign sticker	000 010 006	
1x	Wiring loom adapter	03G 971 033 M	all
4x	Adjustment screw	WHT 000 530	all
5x	M8x58 socket head bolt	N 105 811 01	all
8x	M6x88 socket head bolt	03G 103 385 A	all
4x	Pump injector element	000 130 073 SX	BMA, BKP, BVE, BWV
4x	Pump injector element	03G 130 073 TX	BMR, BUZ, BMN

Parts supply

The parts must be ordered as required from the importer.

Parts despatch control

All removed parts must be processed according to the instructions in the Warranty Handbook.

Repair instructions

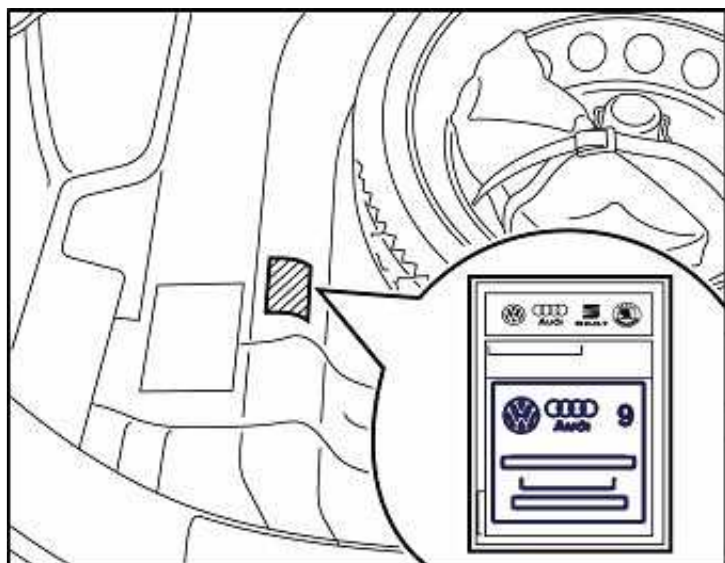


Technical background

On some vehicles with 2.0l TDI engine deposits can settle on the Piezo pump injector elements because of dirty engine oil. This can lead to running problems.

Check

If the vehicle is listed in the systems as **not** completed, check whether a campaign sticker with the entry "**23H9 date/stamp**" is attached in the spare wheel well area (next to *data sticker*):



If the campaign sticker is attached, the campaign has already been performed. Make the entry "**23H9 date/stamp**" in the service schedule under "Space for workshop entries".

If the campaign sticker with entry "**23H9**" is not fitted,

Carry out the work according to the repair instructions.

Control

Check of work scope (criteria) - see Service-Online/Vehicle-specific information:

Criterion 01	Passat, 88 to 103 kW TDI
Criterion 02	Passat, 120 to 125 kW TDI
Criterion 03	Golf, 125 kW TDI
Criterion 04	Touran with 125 kW TDI

Genuine parts

Order the parts as required.

Quantity	Designation	Part No.:	Engine code

1x	Campaign sticker	000 010 006	
1x	Wiring loom adapter	03G 971 033 M	all
4x	Adjustment screw	WHT 000 530	all
5x	M8x58 socket head bolt	N 105 811 01	all
8x	M6x88 socket head bolt	03G 103 385 A	all
4x	Pump injector element	000 130 073 SX	BMA, BKP, BVE, BWV
4x	Pump injector element	03G 130 073 TX	BMR, BUZ, BMN

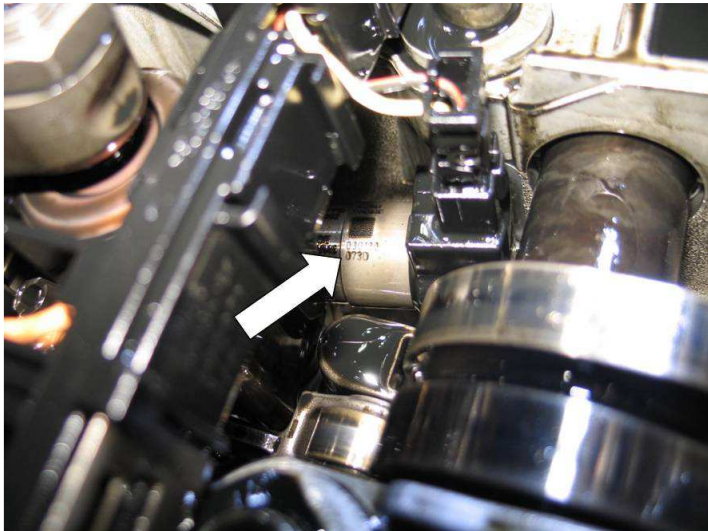
Work

Criterion 01 to 04: Check and if necessary replace pump injector elements

Remove the cylinder head cover according to the repair manual

=> drive unit, 4 cyl. diesel engine (2.0l, 4 valve), rep. gr. 15 engine cylinder head, valve drive, cylinder head, remove and install cylinder head cover

Check the part number -see arrow- on the pump injector element.



All pump injector elements with the part number

- **03G 130 073 D** or
- **03G 130 073 M**

must **be replaced**

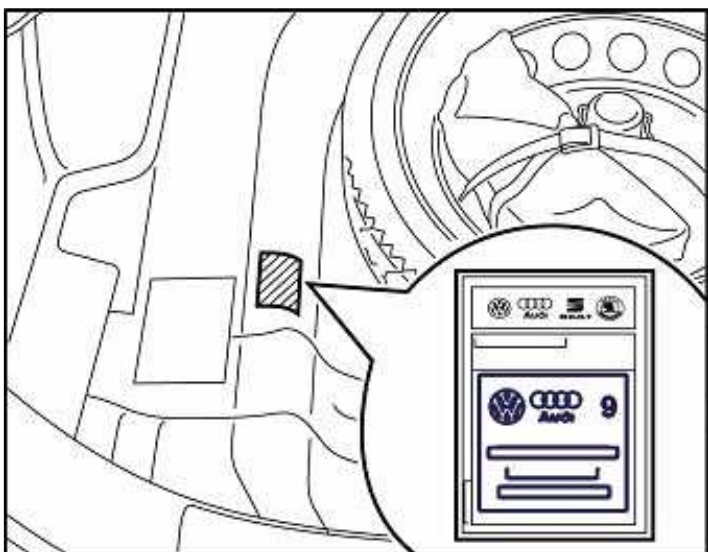
=> drive unit, 4 cyl. diesel engine (2.0l, 4 valve), rep. gr. 23 fuel preparation diesel injection, diesel direct injection system, remove and install pump injector unit.

All other pump injector elements are correct and must not be replaced.



To prevent renewed resistance, replace the wiring loom for the pump-injector units in addition to the pump-injector units.

Identification



Only after carrying out **all the** necessary work make the entry "23H9 date/stamp" in the service schedule under "Space for entries the workshop" **and** on the sticker, **Part No.: 000 010 006**.

Attach the fully completed campaign sticker in the area of the spare wheel well (next to the data sticker).

▲ Repair instructions ▲ Notes