
5. Troubleshooting

1) General

(1) Tools used for repairing the product

System Diagnostics Disk

MS-DOS Booting Disk

System Diagnostics Card

Screwdrivers (+,-)

Tweezers

Multi-meter

Oscilloscope

Logic Analyzer

(2) Replaceable Units (FRU: Field Replaceable Unit)

DDR2 RAM Module

2.5" PATA HDD

ODD – Super multi Dual layer drive or DVD Combo Drive or Etc.

Wireless LAN Module

Bluetooth Module

MDC Module

Keyboard

System Fan

Touch Pad

LCD Panel

LCD Inverter

Main Board

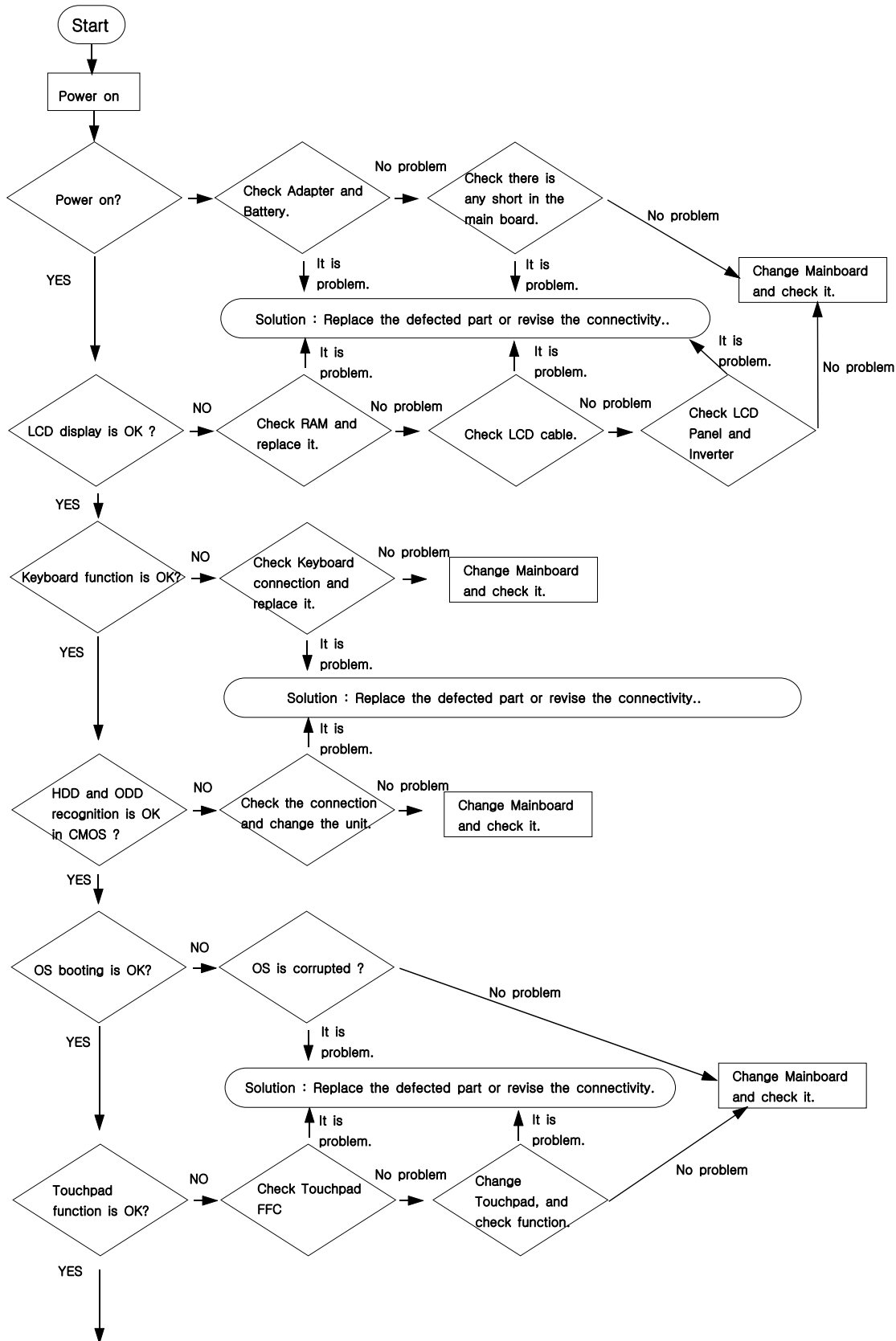
PCMCIA Frame

Harness Cable – MDC Cable, Bluetooth Cable, LCD Cable,
Wireless LAN Antenna, DMB Antenna

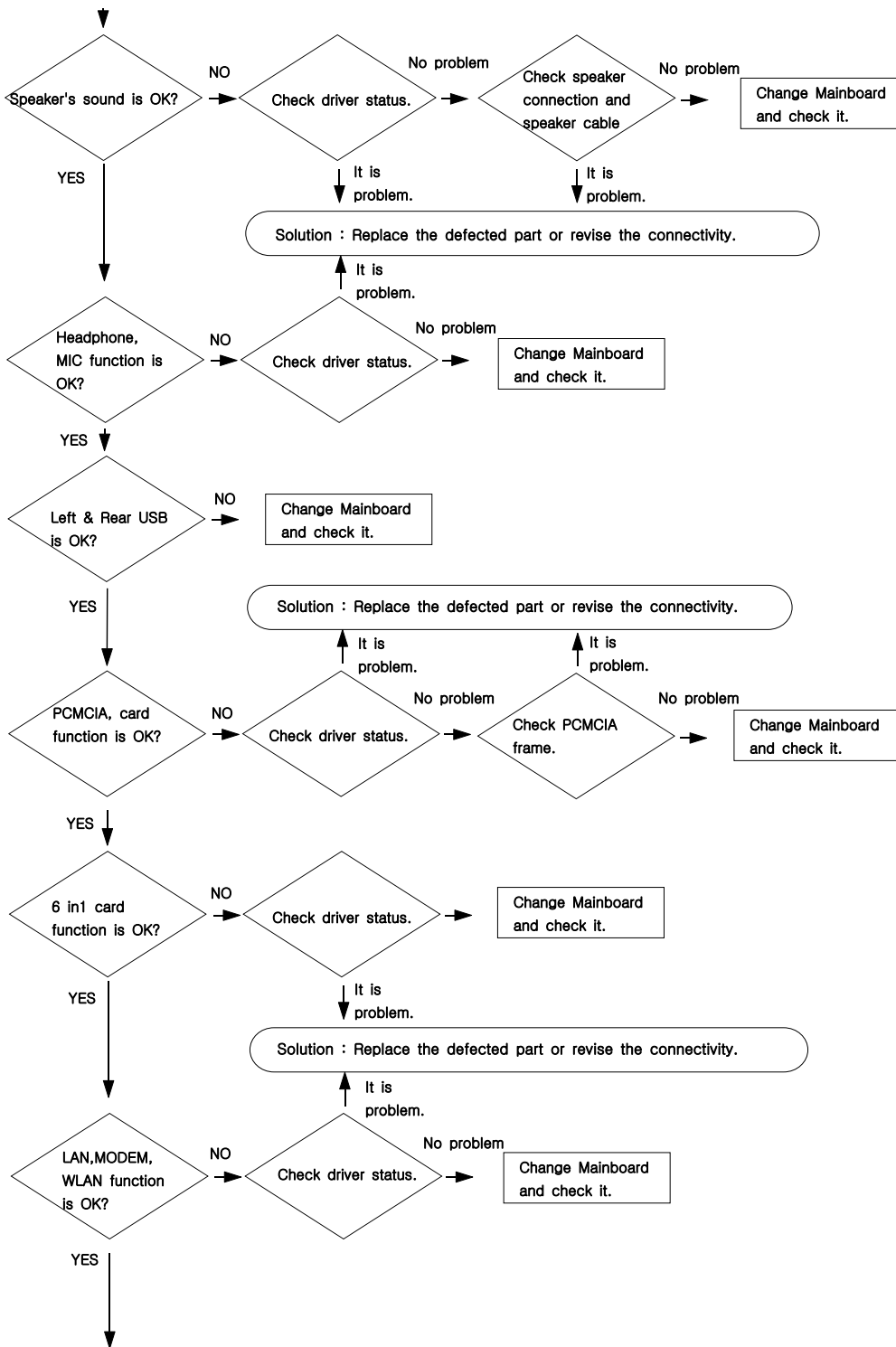
FFC - Touch Pad FFC

5. Troubleshooting

2) Debugging Flow Chart



5. Troubleshooting



5. Troubleshooting

