



File name

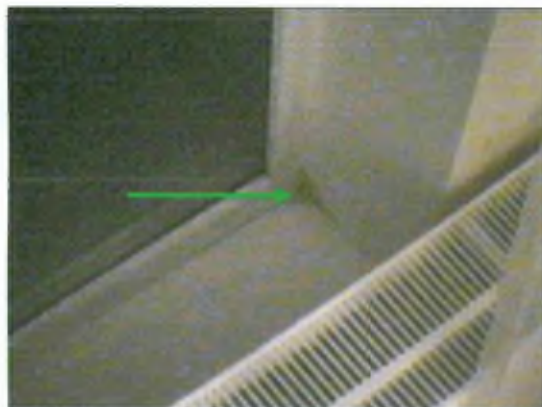
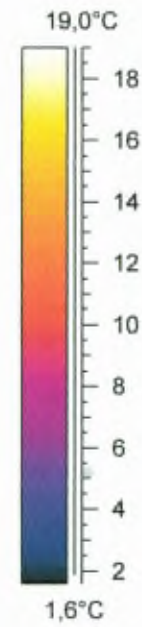
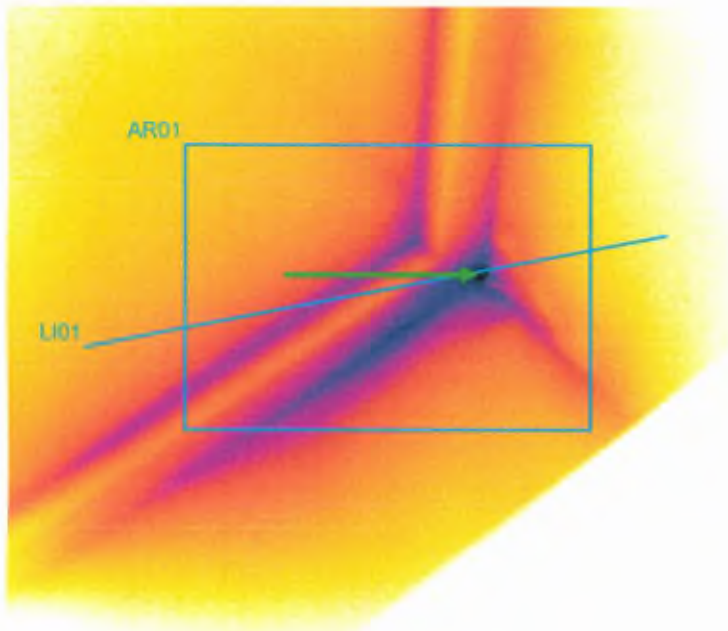
B0210-03.img

Time

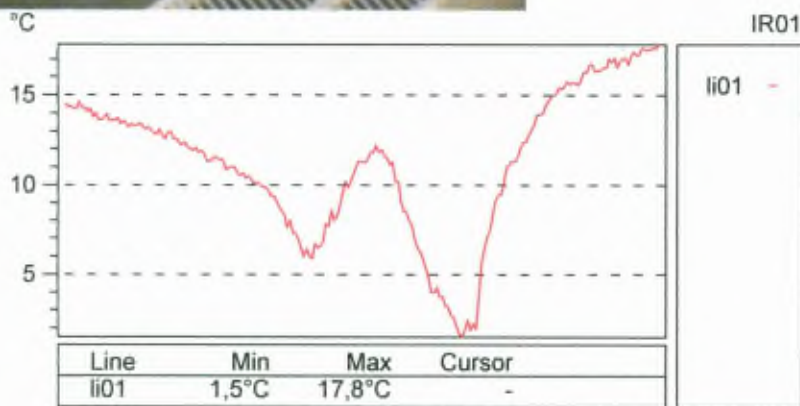
18:58:33

Date

2011.02.10



Object parameter	Value
Ambient temperature	21,0°C
Label	Value
LI01 : max	17,8°C
LI01 : min	1,5°C
LI01 : max-min	16,3°C
AR01 : max	17,0°C
AR01 : min	1,5°C
AR01 : max-min	15,5°C
AR01 : avg	11,1°C



File name

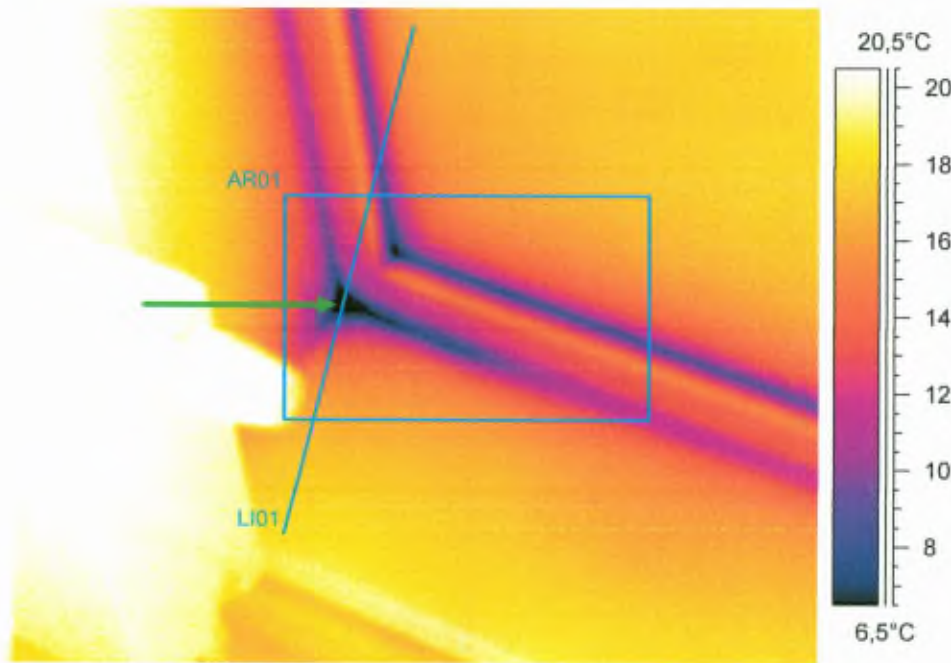
B0210-05.img

Time

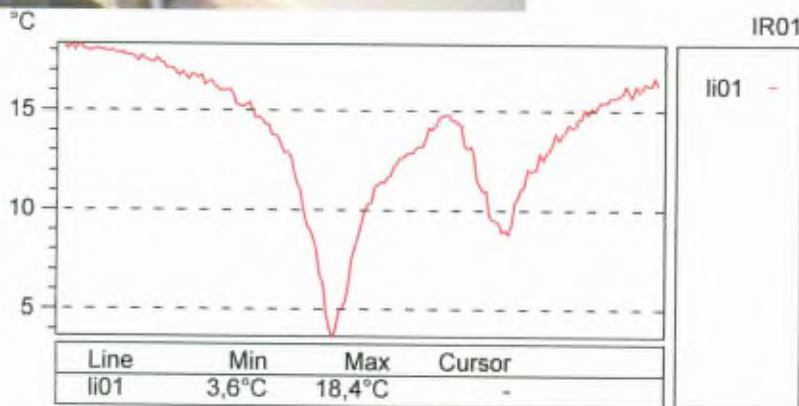
18:59:35

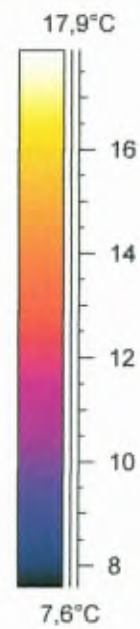
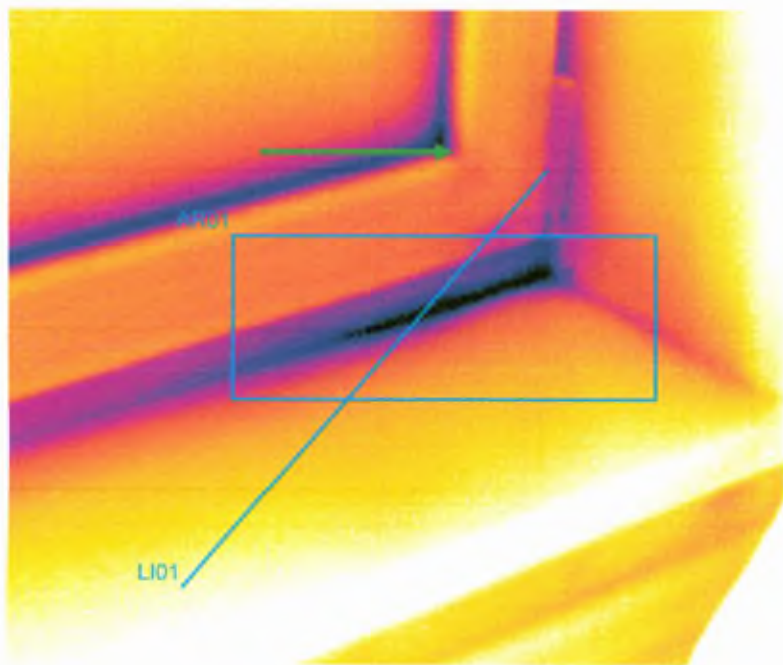
Date

2011.02.10

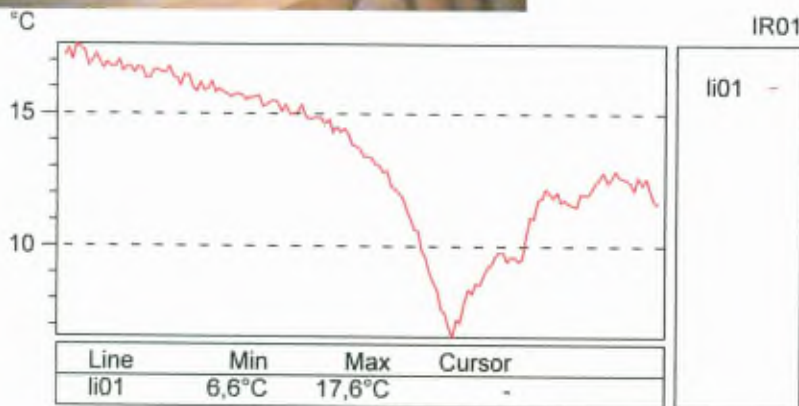


Object parameter	Value
Ambient temperature	21,0°C
Label	Value
LI01 : max	18,4°C
LI01 : min	3,6°C
LI01 : max-min	14,7°C
AR01 : max	20,7°C
AR01 : min	3,6°C
AR01 : max-min	17,1°C
AR01 : avg	13,2°C





Object parameter	Value
Ambient temperature	21,0°C
Label	Value
LI01 : max	17,6°C
LI01 : min	6,6°C
LI01 : max-min	11,1°C
AR01 : max	16,3°C
AR01 : min	6,6°C
AR01 : max-min	9,8°C
AR01 : avg	12,5°C



File name

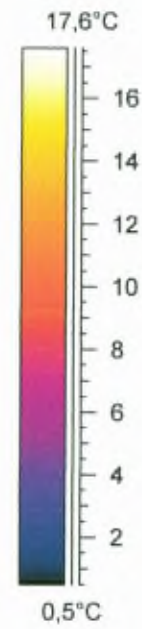
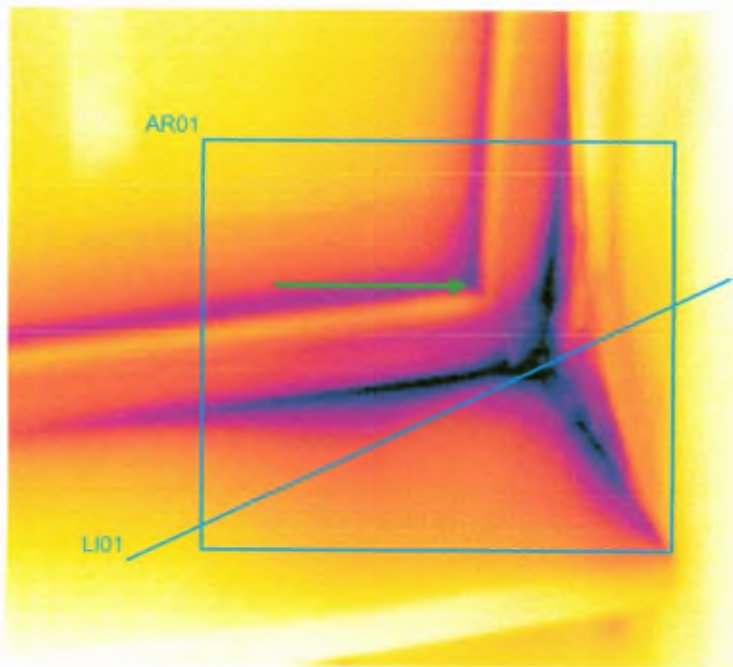
B0210-09.img

Time

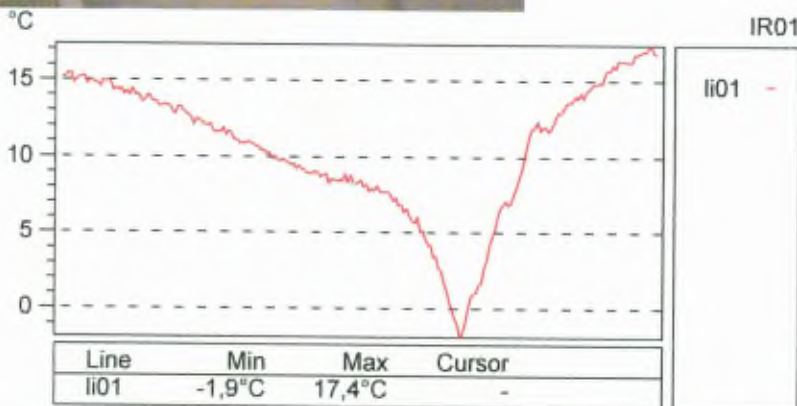
19:01:36

Date

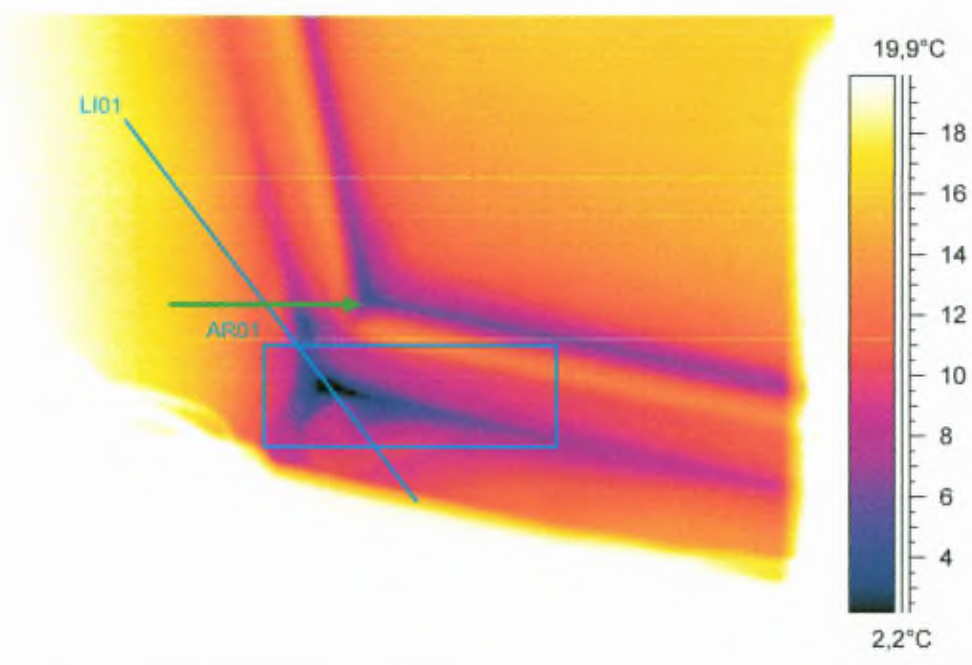
2011.02.10



Object parameter	Value
Ambient temperature	21,0°C
Label	Value
LI01 : max	17,4°C
LI01 : min	-1,9°C
LI01 : max-min	19,2°C
AR01 : max	16,4°C
AR01 : min	-1,9°C
AR01 : max-min	18,3°C
AR01 : avg	9,8°C



File name	Time	Date
B0210-11.img	19:03:23	2011.02.10



Object parameter	Value
Ambient temperature	21,0°C
Label	Value
LI01 : max	18,1°C
LI01 : min	0,3°C
LI01 : max-min	17,9°C
AR01 : max	13,3°C
AR01 : min	0,3°C
AR01 : max-min	13,0°C
AR01 : avg	8,2°C

