

UNLOCK HUAWEI E220 HSDPA MODEM

MOST OF AVAILABLE E220 HSDPA MODEMS ARE LOCKED TO A PARTICULAR SERVICE PROVIDER OR A NETWORK AND NO ONE CAN USE IT FOR OTHER NETWORKS. THIS BLOG IS CREATED TO HELP PEOPLE TO EASILY UNLOCK THEIR OWN MODEMS WITH ZERO COST

SUNDAY, MARCH 15, 2009

Unlocking Procedure

Step 1

Download the Following Softwares or [Get the Software pack from here](#)

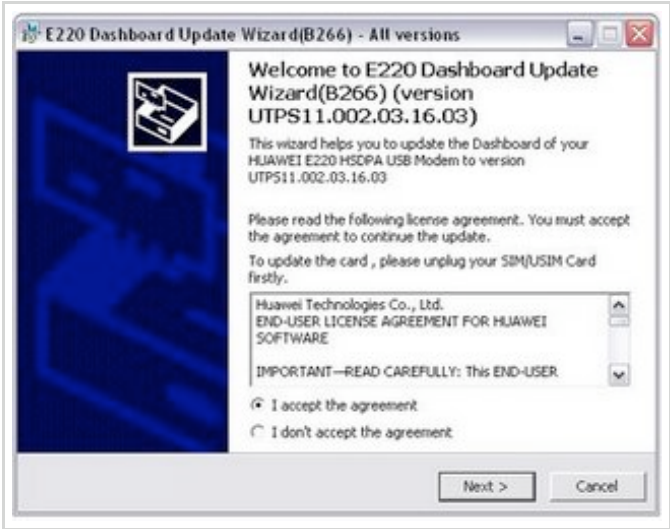
- Huawei E220 Firmware
- Hex Editor XVI32
- QMAT - QC Mobile Analysis Tool
- E220 SimLock Unlocking Tool

Note:

No need to get the latest version of E220 Firmware for unlocking. It just use for detecting the Harware Interface. For *Hex Editor*, *QMAT* and *E220 SimLock Unlock Tool* requires no installation. They just exe files and double click on them to run.

Step 2

- Remove the SIM card and connect the E220 USB Modem to the PC
- Run the E220 Firmware
- Now you'll get the following window. Select "I accept the agreement"



- Then wait untill it detect the modem interface



Ads by Google

- [Huawei E220](#)
- [Unlocking Code](#)
- [Unlocking Cell Phones](#)
- [Unlock 2.2 & 3G](#)
- [Remote Code](#)

[Timing & Synchronization](#)

Products for IEEE 1588 PTP Hardware timestamping support
[www.imsystech.com](#)

[Under Sea Wireless Modem](#)

Highly reliable, low power needed easy to integrate into applications
[www.dspcomm.com](#)

[DCombus Iris shdsl](#)

High speed shdsl modems and DSLAM for 2-44 Mbps Ethernet over Copper.
[www.dcombus.com](#)

[MultiTech Distributor](#)

Embedded Data/Fax Communications Universal Socket Modem Modules
[www.Tri-M.com](#)

[TMobile USA Unlock Code](#)

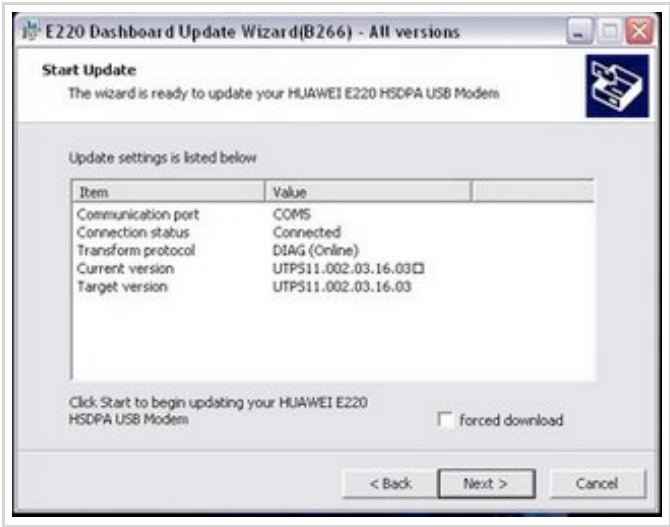
Unlock your TMobile USA phone via code. Fast & Guaranteed!
[www.UnlockItNow.com](#)

Ads by Google

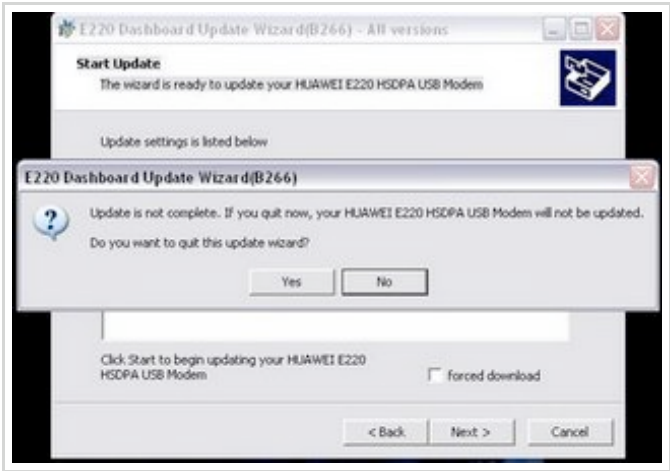
[Hsdpa Modem Suppliers](#)

Thousands of Prequalified Suppliers Trade Leads, Products & Companies
[Alibaba.com](#)

- After the detection of Modem, you will get the following window. Press **Cancel**

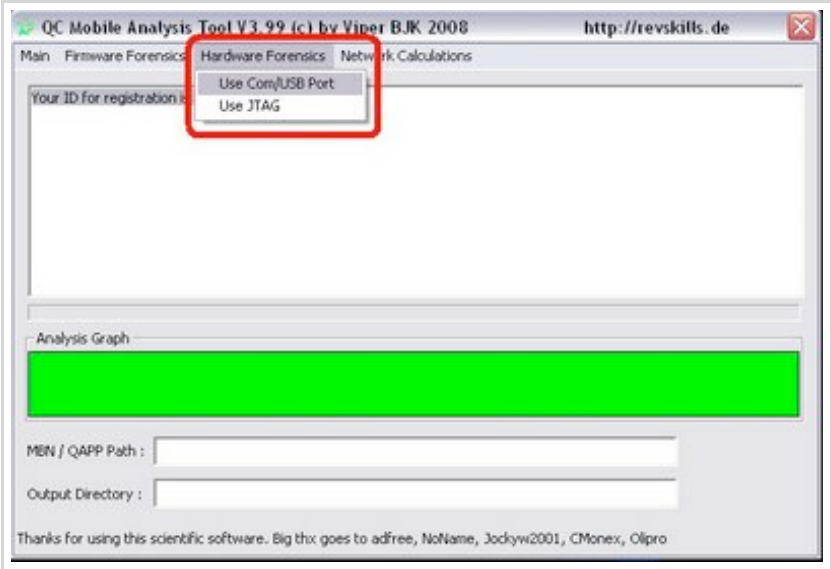


- Press **Yes** to Quit from the Firmware Update Process and this completes the Step 2



Step 3

- Run QMAT and select : Hardware Forensics -> Use Com/USB Port



- Select the correct COM interface which was detected by Firmware Updater

[FTD Comunicação de Dados](#)
soluções em conectividades, baluns, painel de balun, patches e cabos.
www.ftdcom.com.br

[Ericsson Phone](#)
Find a Solution for any Support problem Easily
www.Fixya.com

[DSP Consultants](#)
DSP Hardware & Software design
TMS320C6000 C5000
Blackfin SHARC
www.oakvalley.com

[Buy China Mobile Phones](#)
3.0" Touch-screen, Bluetooth, 1G Buy Direct From China - 3-5 days
www.chinatronic.com

BLOG ARCHIVE

March (1)

ABOUT ME

INDUNIL ABAYARATHNA

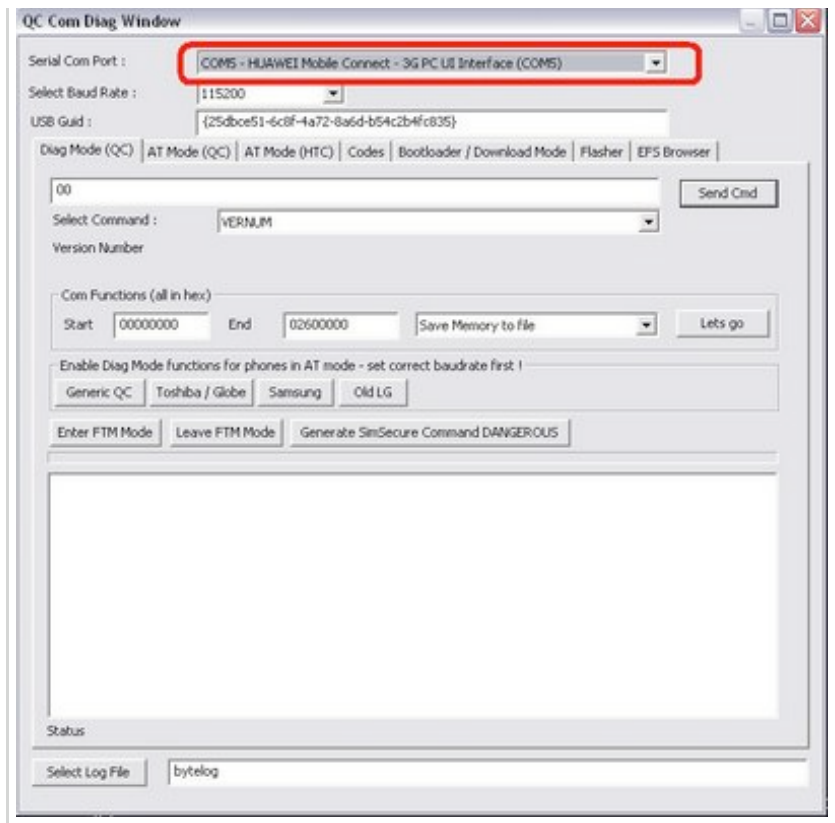
[VIEW MY COMPLETE PROFILE](#)

FOLLOWERS

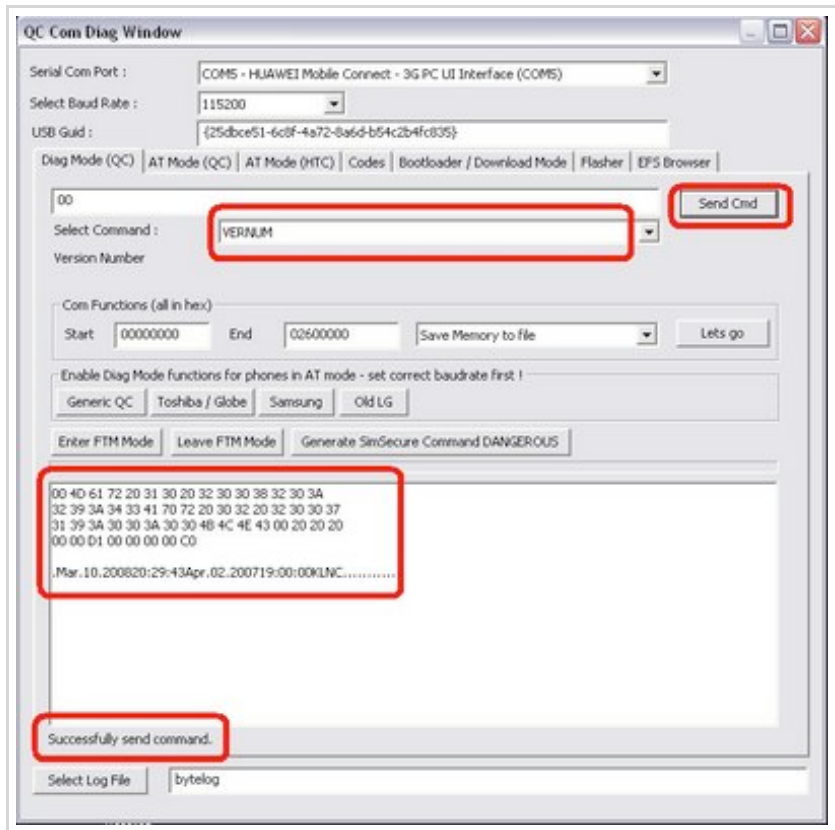
[Follow](#) or [Sign in](#)

There are no followers yet.
[Be the first](#)

[Follow and connect with your friends](#)

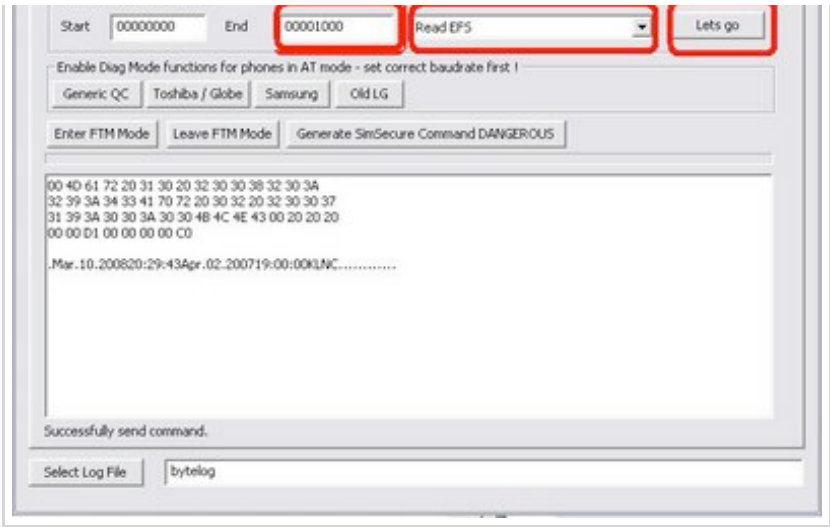


- Select Command **VERNUM** and Press **Send Cmd**. Then you will get version number and display Successfully Send Command at Bottom of the window if you correctly set the COM interface. If this not succes then make sure you are selected correct COM interface

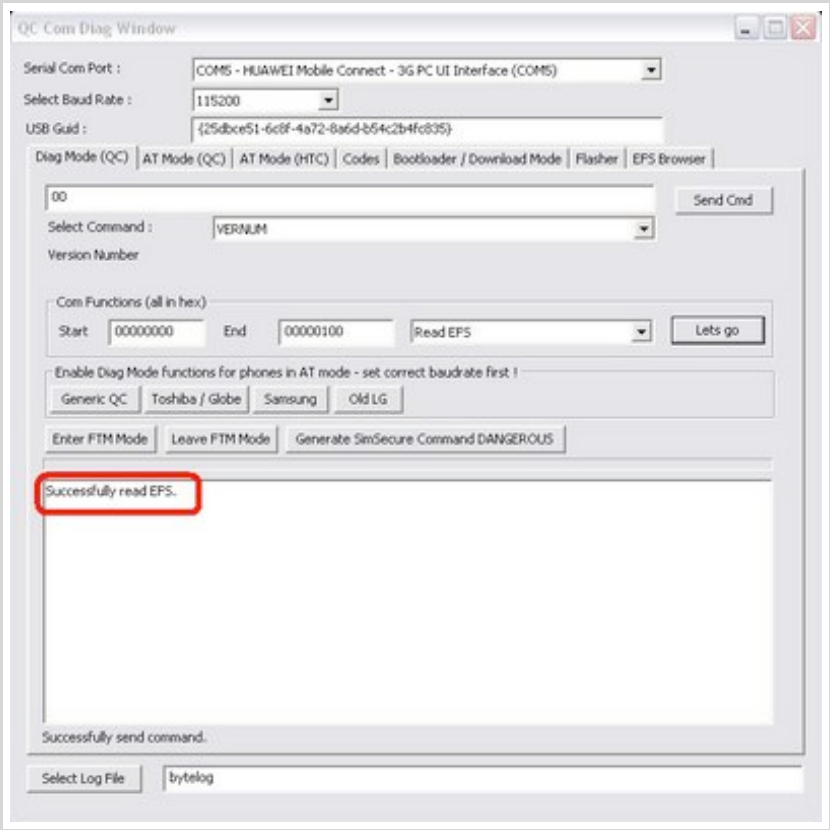


- Now Select **Read EFS** and set the End address as **00001000** and then press **Lets Go**.Now you will asked to save the file. Give name as **Flash.bin** and save it any where.



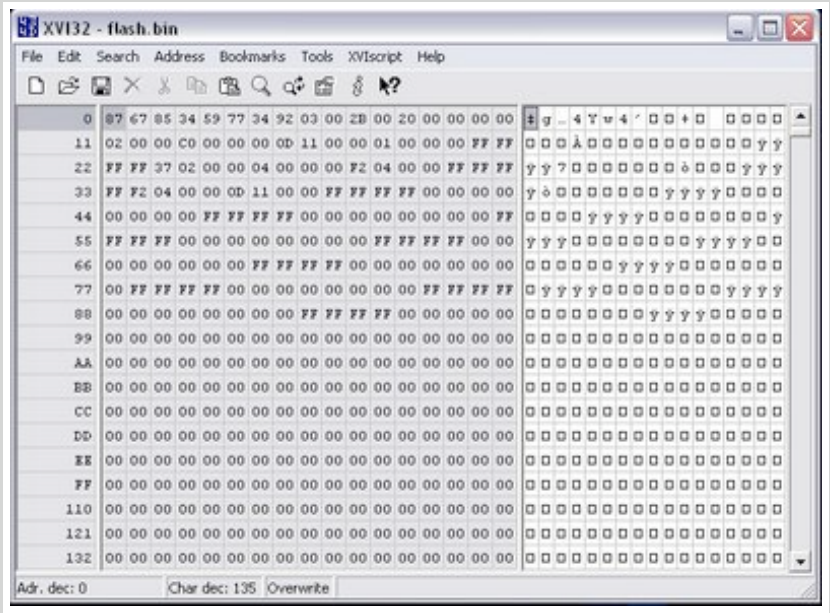


- You will get **Successfully read EFS** if all the things went correct.

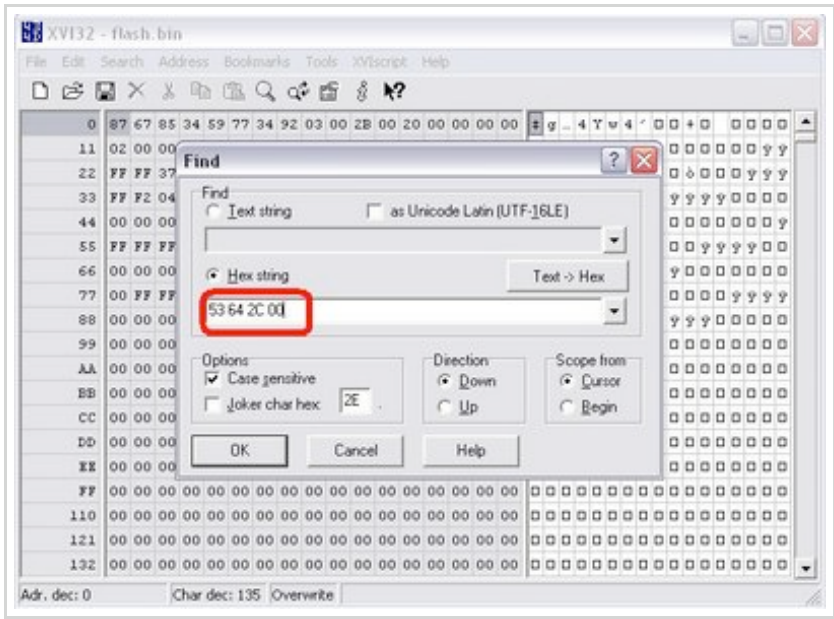


Step 4

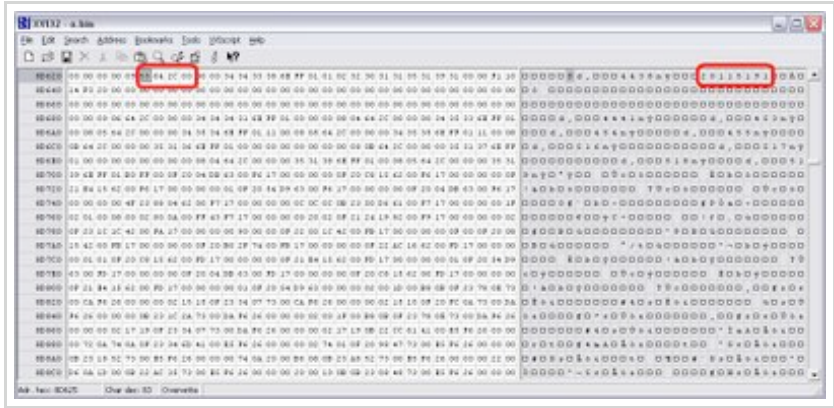
- Run XVI32 Hex Editor and Open the saved file **Flash.bin**



- Find the String **53 64 2C 00** in the dump. Select menu item, Search -> Find



- In the same line of the corresponding place of the right side window will show the 8 digit lock code of your modem. It is easy to find that, there is no other 8 consecutive digit in the same line of the string **53 64 2C 00**



Step 5

- Run **E220 SIM Lock Unlock** and enter the unlock code of your modem



- Hurrayyyyyyy..... It is successfully unlocked. Now you can use it for

any Network



POSTED BY INDUNIL ABAYARATHNA AT 6:51 PM 6 COMMENTS

Subscribe to: Posts (Atom)